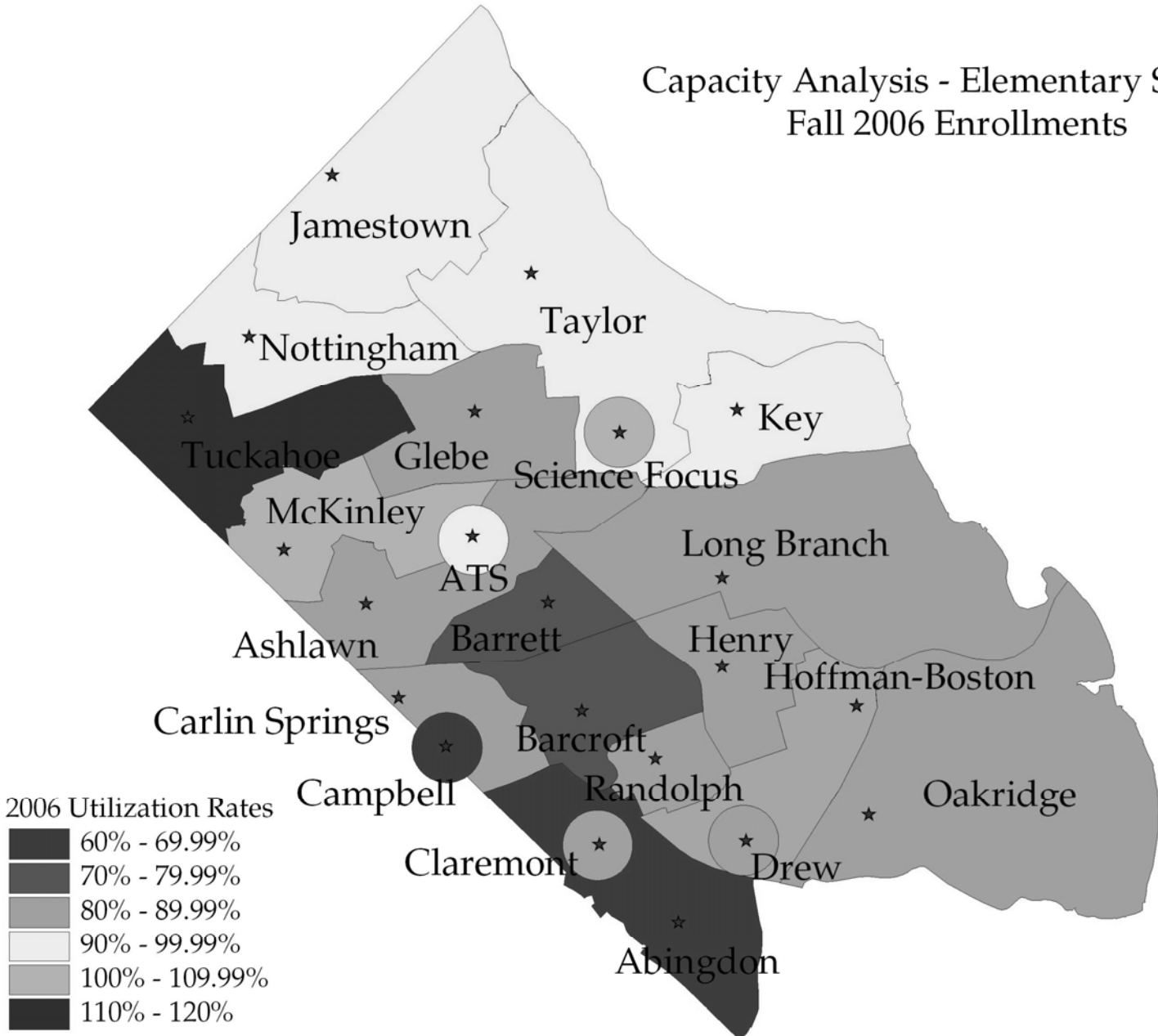


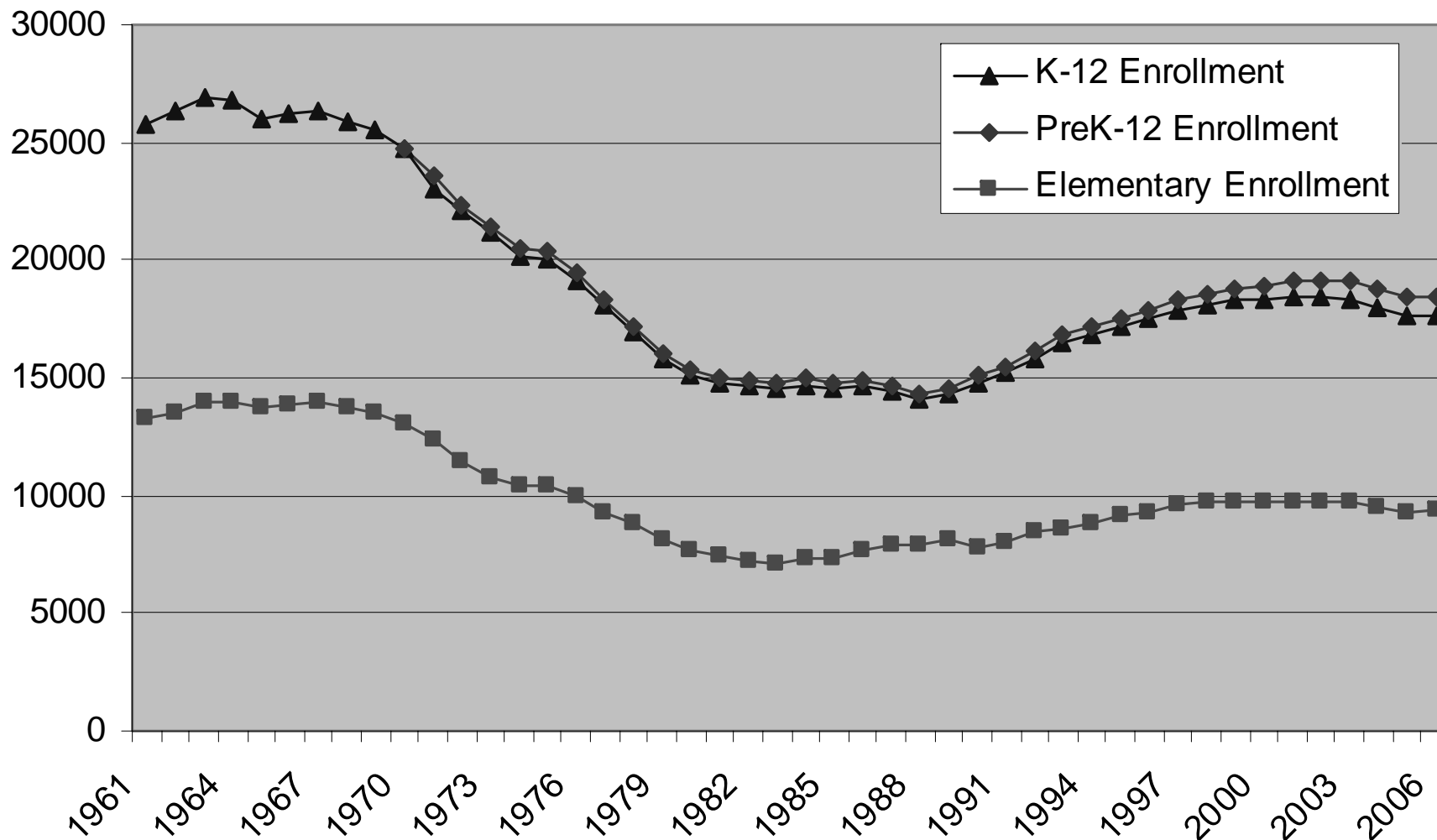
Elementary Capacity and Crowding Committee Update

September 18, 2007

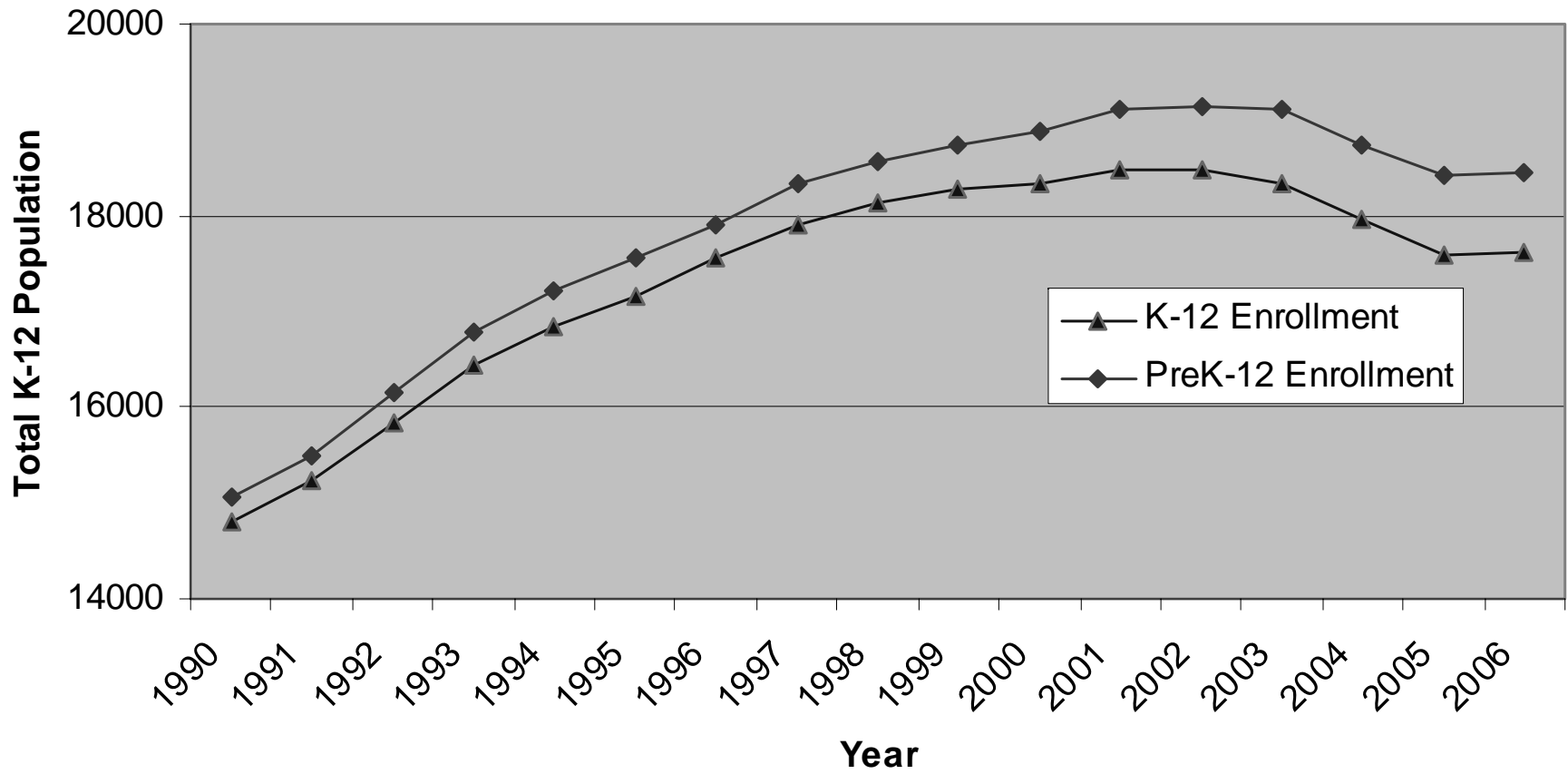
Capacity Analysis - Elementary Schools Fall 2006 Enrollments



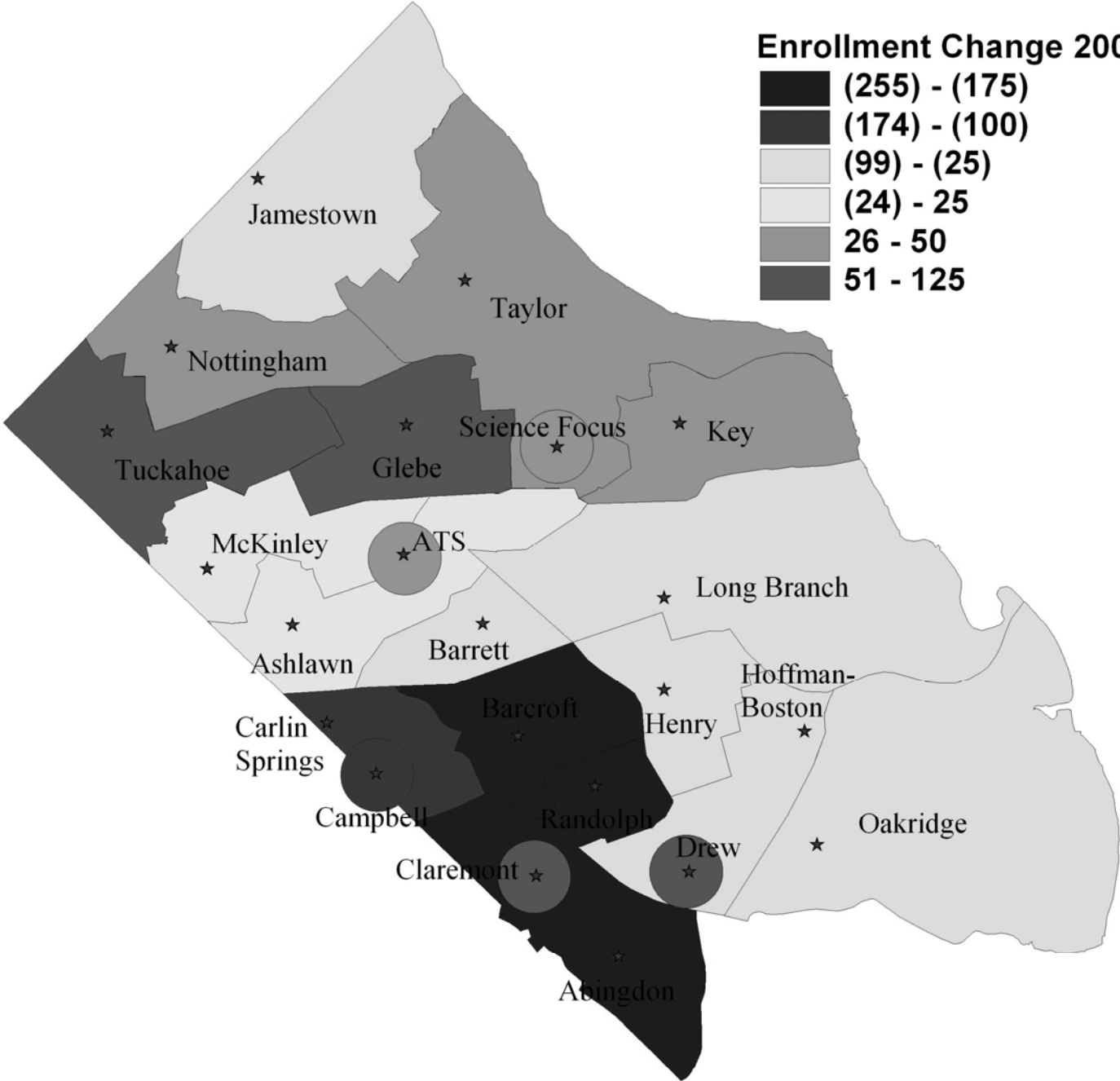
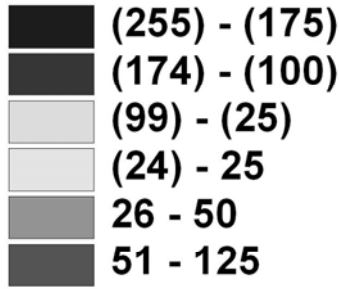
Total K-12 and PreK-12 Enrollment (September 30th), 1961-2006



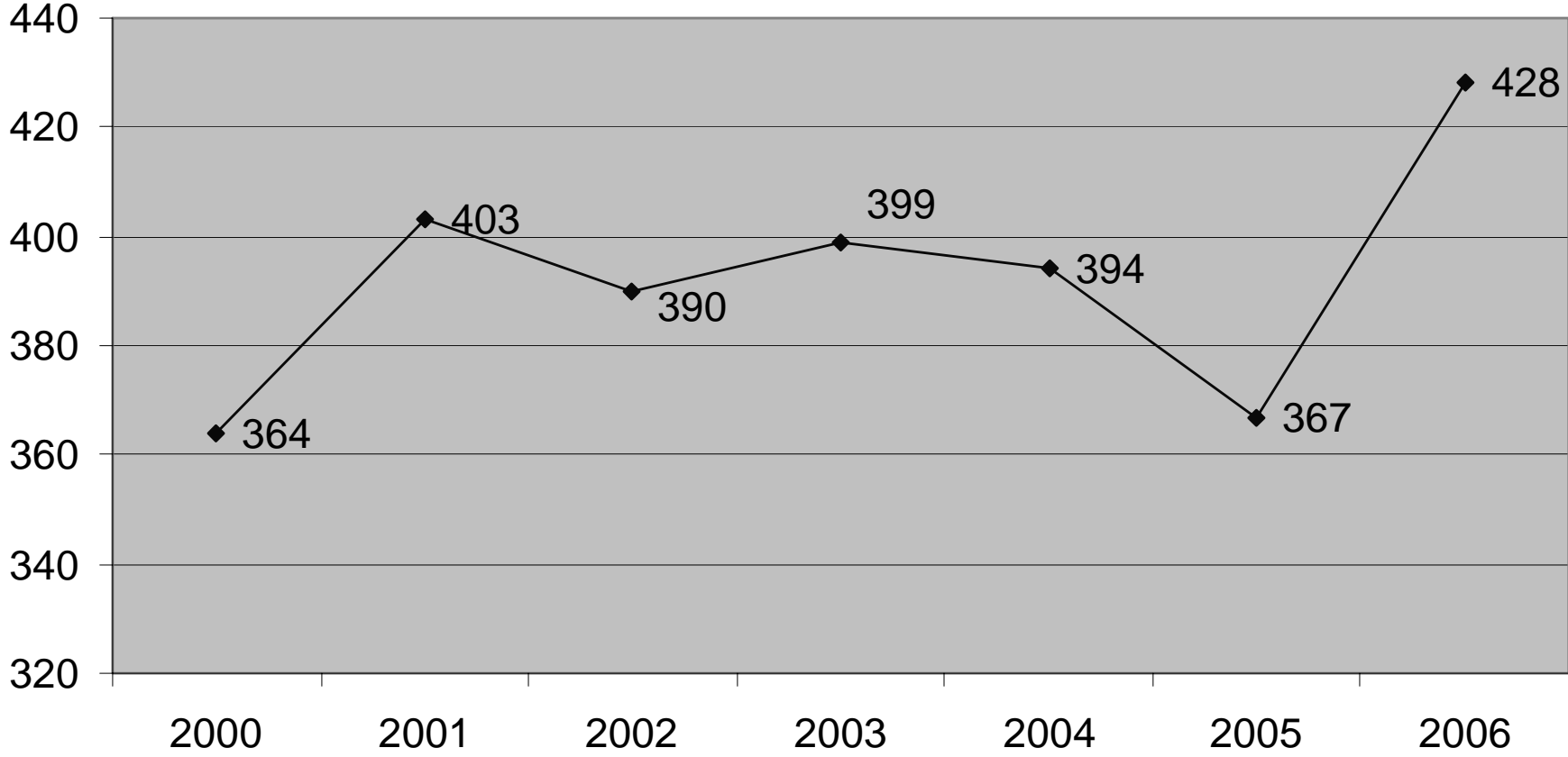
Total PreK-12 and K-12 Enrollment (September 30th), 1990 - 2006



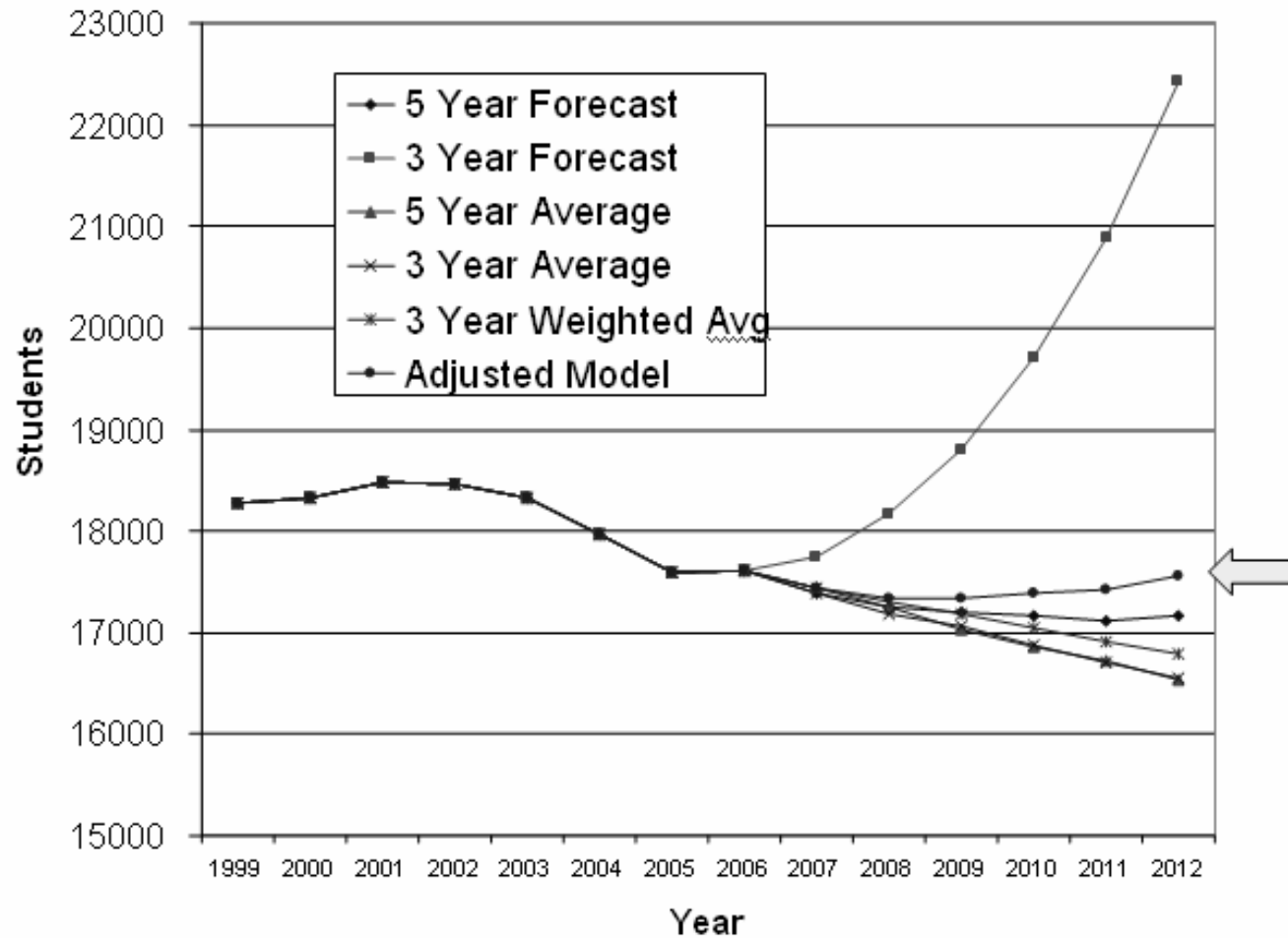
Enrollment Change 2001 to 2006



Nottingham K-5 Population



K-12 Enrollment Projections 2007-2012



Elementary School Capacity

- Capacity Utilization = Enrollment/Capacity
- Current Countywide Utilization is 85.5%
- Formula for Elementary Capacity
 - (Number of K-5 Classrooms times Planning Factor) + PreK Spaces + Spec Ed Programs
- Factors influencing capacity
 - Program placement (PreK and SpEd)
 - Planning Factor
 - Specialized uses: Exemplary Projects, Head Start

Elementary Capacity Analysis

1	<i>School</i>		<i>2006</i>		<i>2007</i>		<i>2008</i>		<i>2009</i>		<i>2010</i>		<i>2011</i>		<i>2012</i>	
2		Capacity	Enrollment	Percent	Enrollment	Percent	Enrollment	Percent	Enrollment	Percent	Enrollment	Percent	Enrollment	Percent	Enrollment	Percent
3	Abingdon	576	353	61.3%	356	61.8%	350	60.8%	346	60.1%	352	61.1%	354	61.5%	356	61.8%
4	ASF	440	444	100.9%	460	104.5%	445	101.1%	452	102.7%	453	103.0%	465	105.7%	460	104.5%
5	ATS	442	440	99.5%	442	100.0%	441	99.8%	441	99.8%	441	99.8%	441	99.8%	441	99.8%
6	Ashlawn	403	355	88.1%	381	94.5%	389	96.5%	417	103.5%	435	107.9%	461	114.4%	455	112.9%
7	Barcroft	442	324	73.3%	308	69.7%	298	67.4%	297	67.2%	300	67.9%	298	67.4%	308	69.7%
8	Barrett	515	384	74.6%	405	78.6%	394	76.5%	413	80.2%	428	83.1%	433	84.1%	431	83.7%
9	Campbell	397	265	66.8%	259	65.2%	248	62.5%	247	62.2%	249	62.7%	245	61.7%	262	66.0%
10	Carlin Springs	563	490	87.0%	496	88.1%	477	84.7%	476	84.5%	485	86.1%	487	86.5%	496	88.1%
11	Claremont	515	444	86.2%	459	89.1%	481	93.4%	484	94.0%	498	96.7%	492	95.5%	502	97.5%
12	Drew	558	477	85.5%	498	89.2%	487	87.3%	493	88.4%	494	88.5%	497	89.1%	502	90.0%
13	Glebe	377	337	89.4%	367	97.3%	379	100.5%	388	102.9%	391	103.7%	399	105.8%	406	107.7%
14	Henry	419	346	82.6%	360	85.9%	337	80.4%	344	82.1%	341	81.4%	346	82.6%	351	83.8%
15	Hoffman-Boston	581	342	58.9%	349	60.1%	316	54.4%	313	53.9%	300	51.6%	297	51.1%	306	52.7%
16	Jamestown	572	529	92.5%	532	93.0%	514	89.9%	525	91.8%	509	89.0%	504	88.1%	521	91.1%
17	Key	626	609	97.3%	596	95.2%	568	90.7%	565	90.3%	567	90.6%	566	90.4%	566	90.4%
18	Long Branch	493	417	84.6%	420	85.2%	422	85.6%	423	85.8%	428	86.8%	425	86.2%	431	87.4%
19	McKinley	402	389	96.8%	389	96.8%	401	99.8%	397	98.8%	402	100.0%	408	101.5%	411	102.2%
20	Nottingham	444	432	97.3%	448	100.9%	452	101.8%	479	107.9%	493	111.0%	513	115.5%	497	111.9%
21	Oakridge	560	446	79.6%	446	79.6%	459	82.0%	465	83.0%	472	84.3%	474	84.6%	477	85.2%
22	Randolph	420	349	83.1%	344	81.9%	321	76.4%	321	76.4%	316	75.2%	323	76.9%	325	77.4%
23	Taylor	631	579	91.8%	568	90.0%	544	86.2%	530	84.0%	535	84.8%	539	85.4%	541	85.7%
24	Tuckahoe	499	568	113.8%	589	118.0%	591	118.4%	605	121.2%	613	122.8%	625	125.3%	608	121.8%

Survey

- First glance shows no shortage of children
- Results will be more useful after 9/30 counts
- Compare number of respondents to actual children in area investigated
- Extrapolate for younger children
- Currently, 475 Kindergarteners in area investigated

ECCC Charge

Establish a system-wide task group process to address crowding and capacity issues at identified schools. The charge to this task group is to consider any reasonable solution that over six years will:

- Resolve crowding at Tuckahoe and potential crowding at other identified schools
- Ensure that no other elementary school will be crowded as a result
- Provide at least one Pre-K program of any type (e.g., Head Start, VPI, Montessori, Pre-K special education) at every elementary school
- Not change choices available or admission policies

The Task Group will report to the Superintendent with recommendations in December 2007.

ECCE Membership

The Task Group will consist of:

2 citizen co-chairs appointed by the School Board

From each elementary school:

- 1 parent/1 parent alternate chosen by the PTA
- 1 principal or designee

1 representative from Montessori and 1 representative from VPI
appointed by Early Childhood Advisory Committee

1 citizen representative from Facilities Advisory Committee

1 citizen representative from Advisory Council on Instruction

Staff Liaisons:

Assistant Superintendent, Administrative Services

Special Projects Coordinator

Facilities Planner

ECCC Timeline

The Task Group will follow this general timeline:

February – April 2007

- Inform PTAs
- Complete spring projections
- Conduct survey
- Identify task group members

April – June 2007

- Hold initial organizational meeting to:
 - Provide task group with data including spring projections and survey result, and
 - Plan work schedule

ECCC Timeline (continued)

September – December 2007

- Analyze data, including September 30, 2007 enrollment count, determine scope of problem, and develop possible solutions
- Report to Superintendent in October, after receipt of enrollment count and new projections, status of the committee's work and recommendations, if any, for change in scope of committee's charge
- Keep track of related ancillary issues that arise during committee deliberations and report them to the Superintendent for potential consideration in a subsequent process
- Make recommendations to Superintendent in December 2007

Communication on the Process

Web page:

<http://www2.apsva.us/15401081152149600/site/default.asp>

School Talk:

<https://acs.medianext.com/cgi-bin/emd.cgi/acs/start.html?dbd=aps&type=ALL&mkt=A2dczBs4kS0wLXc>

Individual Schools:

Task Group members representing each school will develop an information plan for their school

ECCC Timeline (continued)

January 2008

- Superintendent makes recommendations to the School Board
- School Board holds public hearing
- School Board takes action